

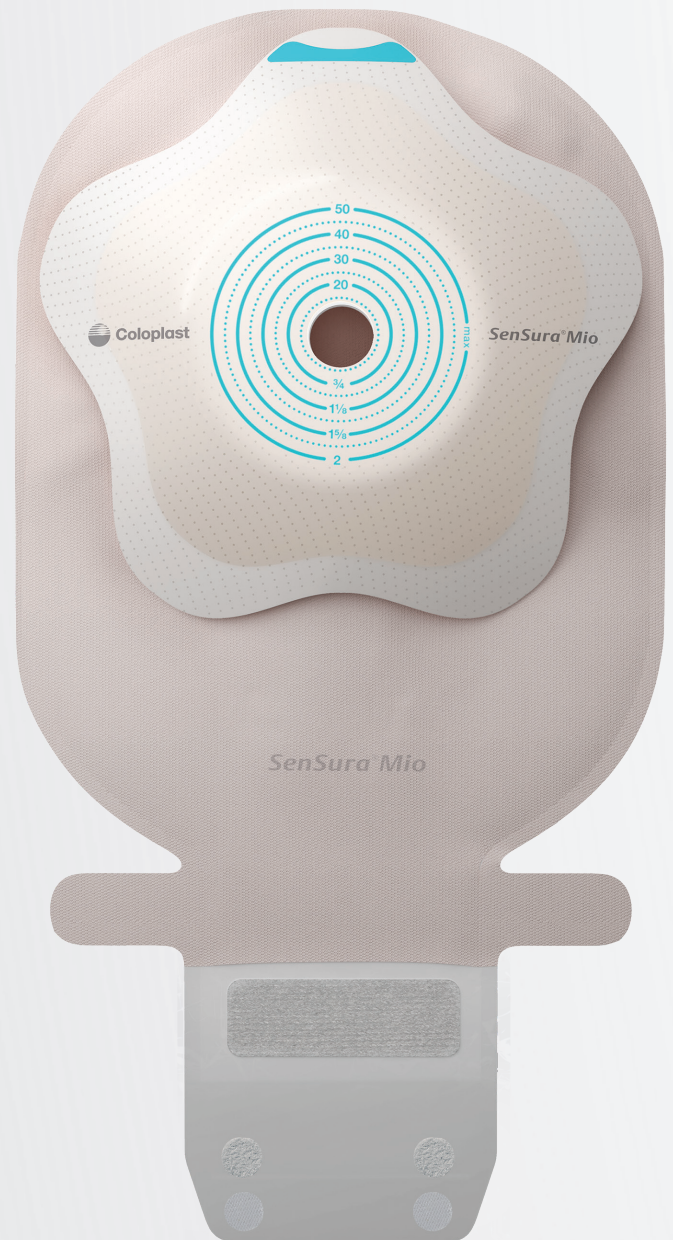
SenSura® Mio Convex Flip

The first pouching system specially designed for curves, bulges and hernias

SenSura Mio Convex Flip with BodyFit Technology® increases the contact area between the adhesive barrier and the skin of the outward area, **resulting in better adherence to maintain a secure fit.**



*Just flip
to fit!*



There's a Mio for everybody



A curved fit for curved areas

SenSura[®] Mio Convex Flip



SenSura[®] Mio Convex Flip 1-piece closed pouch

| Product Code | Pouch Color | Pouch Size | Filter | Cut | Stoma size | Barrier Size | Units/Box |
|--------------|-------------------------------|------------|--------|------------|--------------------------|--------------|-----------|
| 18152 | Opaque with inspection window | Maxi | Filter | Cut-to-fit | 3/8" - 1 9/16" | S | 10 |
| 18170 | Opaque with inspection window | Maxi | Filter | Cut-to-fit | 3/8" - 2" | M | 10 |
| 18171 | Opaque with inspection window | Maxi | Filter | Pre-cut | 1" (cuts to 2") | M | 10 |
| 18172 | Opaque with inspection window | Maxi | Filter | Pre-cut | 1 3/16" (cuts to 2") | M | 10 |
| 18173 | Opaque with inspection window | Maxi | Filter | Pre-cut | 1 3/8" (cuts to 2") | M | 10 |
| 18180 | Opaque with inspection window | Maxi | Filter | Cut-to-fit | 3/8" - 2 3/8" | L | 10 |
| 18181 | Opaque with inspection window | Maxi | Filter | Pre-cut | 1 9/16" (cuts to 2 3/8") | L | 10 |
| 18182 | Opaque with inspection window | Maxi | Filter | Pre-cut | 1 3/4" (cuts to 2 3/8") | L | 10 |



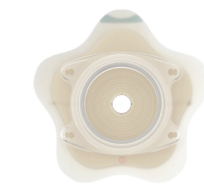
SenSura[®] Mio Convex Flip 1-piece drainable pouch

| Product Code | Pouch Color | Pouch Size | Filter | Cut | Stoma size | Barrier Size | Units/Box |
|--------------|-------------------------------|------------|-----------|------------|---------------------------|--------------|-----------|
| 18301 | Opaque with inspection window | Maxi | Filter | Pre-cut | 1" (cuts to 1 9/16") | S | 10 |
| 18302 | Opaque with inspection window | Maxi | Filter | Pre-cut | 1 3/16" (cuts to 1 9/16") | S | 10 |
| 18305 | Transparent | Maxi | Filter | Cut-to-fit | 3/8" - 1 9/16" | S | 10 |
| 18312 | Opaque with inspection window | Maxi | Filter | Cut-to-fit | 3/8" - 2" | M | 10 |
| 18313 | Opaque with inspection window | Maxi | Filter | Pre-cut | 1" (cuts to 2") | M | 10 |
| 18314 | Opaque with inspection window | Maxi | Filter | Pre-cut | 1 3/16" (cuts to 2") | M | 10 |
| 18315 | Opaque with inspection window | Maxi | Filter | Pre-cut | 1 3/8" (cuts to 2") | M | 10 |
| 18320 | Transparent | Maxi | No Filter | Cut-to-fit | 3/8" - 2" | M | 10 |
| 18321 | Transparent | Maxi | Filter | Cut-to-fit | 3/8" - 2" | M | 10 |
| 18322 | Transparent | Maxi | Filter | Pre-cut | 1" (cuts to 2") | M | 10 |
| 18323 | Transparent | Maxi | Filter | Pre-cut | 1 3/16" (cuts to 2") | M | 10 |
| 18324 | Transparent | Maxi | Filter | Pre-cut | 1 3/8" (cuts to 2") | M | 10 |
| 18330 | Opaque with inspection window | Maxi | Filter | Cut-to-fit | 3/8" - 2 3/8" | L | 10 |
| 18331 | Opaque with inspection window | Maxi | Filter | Pre-cut | 1 9/16" (cuts to 2 3/8") | L | 10 |
| 18332 | Opaque with inspection window | Maxi | Filter | Pre-cut | 1 3/4" (cuts to 2 3/8") | L | 10 |
| 18333 | Opaque with inspection window | Maxi | Filter | Pre-cut | 2" (cuts to 2 3/8") | L | 10 |
| 18340 | Transparent | Maxi | No Filter | Cut-to-fit | 3/8" - 2 3/8" | L | 10 |
| 18341 | Transparent | Maxi | Filter | Cut-to-fit | 3/8" - 2 3/8" | L | 10 |
| 18342 | Transparent | Maxi | Filter | Pre-cut | 1 9/16" (cuts to 2 3/8") | L | 10 |
| 18343 | Transparent | Maxi | Filter | Pre-cut | 1 3/4" (cuts to 2 3/8") | L | 10 |
| 18344 | Transparent | Maxi | Filter | Pre-cut | 2" (cuts to 2 3/8") | L | 10 |



SenSura[®] Mio Convex Flip 1-piece urostomy pouch

| Product Code | Pouch Color | Pouch Size | Cut | Stoma size | Barrier Size | Units/Box |
|--------------|-------------|------------|------------|---------------------------|--------------|-----------|
| 18401 | Opaque | Maxi | Cut-to-fit | 3/8" - 1 9/16" | S | 10 |
| 18402 | Opaque | Maxi | Pre-cut | 3/4" (cuts to 1 9/16") | S | 10 |
| 18403 | Opaque | Maxi | Pre-cut | 1" (cuts to 1 9/16") | S | 10 |
| 18404 | Opaque | Maxi | Pre-cut | 1 3/16" (cuts to 1 9/16") | S | 10 |
| 18405 | Transparent | Maxi | Cut-to-fit | 3/8" - 1 9/16" | S | 10 |



SenSura[®] Mio Click Convex Flip 2-piece barrier

| Product Code | Cut | Stoma size | Barrier Size | Barrier/Coupling Size | Units/Box |
|--------------|------------|--------------------------|--------------|-----------------------|-----------|
| 18500 | Cut-to-fit | 3/8" - 1 3/8" | S | Green | 5 |
| 18501 | Pre-cut | 3/4" (cuts to 1 3/8") | S | Green | 5 |
| 18510 | Cut-to-fit | 3/8" - 1 3/4" | M | Red | 5 |
| 18511 | Pre-cut | 1" (cuts to 1 3/4") | M | Red | 5 |
| 18512 | Pre-cut | 1 3/16" (cuts to 1 3/4") | M | Red | 5 |
| 18513 | Pre-cut | 1 3/8" (cuts to 1 3/4") | M | Red | 5 |
| 18520 | Cut-to-fit | 3/8" - 2 1/8" | L | Blue | 5 |
| 18521 | Pre-cut | 1 3/16" (cuts to 2 1/8") | L | Blue | 5 |
| 18522 | Pre-cut | 1 3/8" (cuts to 2 1/8") | L | Blue | 5 |
| 18523 | Pre-cut | 1 9/16" (cuts to 2 1/8") | L | Blue | 5 |
| 18524 | Pre-cut | 1 3/4" (cuts to 2 1/8") | L | Blue | 5 |
| 18530 | Cut-to-fit | 3/8" - 2 9/16" | XL | Yellow | 5 |
| 18531 | Pre-cut | 1 3/4" (cuts to 2 9/16") | XL | Yellow | 5 |
| 18532 | Pre-cut | 2" (cuts to 2 9/16") | XL | Yellow | 5 |

For more information on how to select the right size product for your patient, see the back page.

There is a SenSura[®] Mio Convex Flip product for every outward area

SenSura Mio Convex Flip barriers are sized to match a full variety of curves, bulges and hernias from small to extra large.

To find the right fit:

1. Measure the stoma size
2. Use the smallest size barrier which fits the stoma.



1 piece

| Stoma size | Available barrier sizes | | | |
|-------------------------------------|-------------------------|-------------------|-------------------|-------------------|
| < 1 ⁹ / ₁₆ " | | | | |
| 1 ⁹ / ₁₆ - 2" | | | | |
| 2 - 2 ³ / ₈ " | | | | |
| > 2 ³ / ₈ " | Refer to 2P range | Refer to 2P range | Refer to 2P range | Refer to 2P range |



2 piece

| Stoma size | Available barrier sizes | | | |
|--|-------------------------|--|--|--|
| < 1 ³ / ₈ " | | | | |
| 1 ³ / ₈ - 1 ³ / ₄ " | | | | |
| 1 ³ / ₄ - 2 ¹ / ₄ " | | | | |
| 2 ¹ / ₄ - 2 ⁹ / ₁₆ " | | | | |

Reminder!

Start with smallest barrier...If needed for larger outward areas - size up.

Talk to your Coloplast Sales Representative to learn more about **SenSura[®] Mio Convex Flip**.

