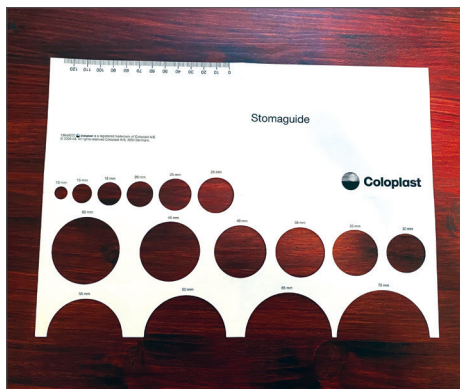


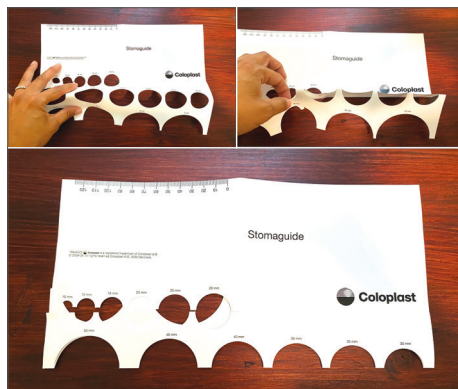
# How to measure an oval stoma

## Pictorial guide

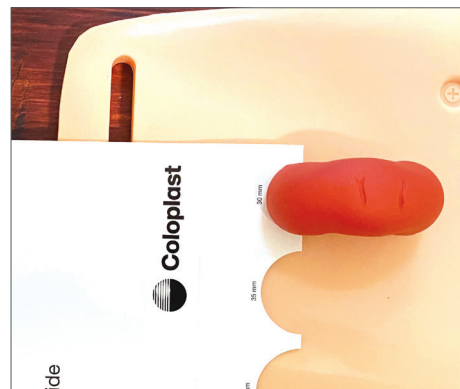
1. Fully open the measuring guide, as shown below.



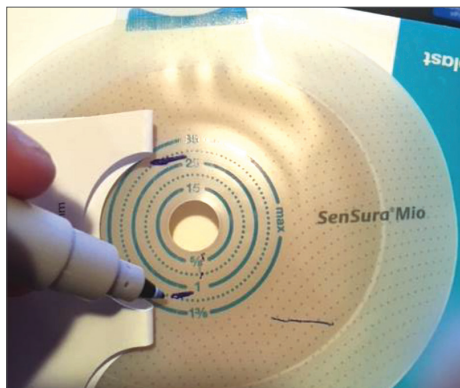
2. To measure an oval stoma, fold the measuring guide in **HALF** (you should see half moon shapes).



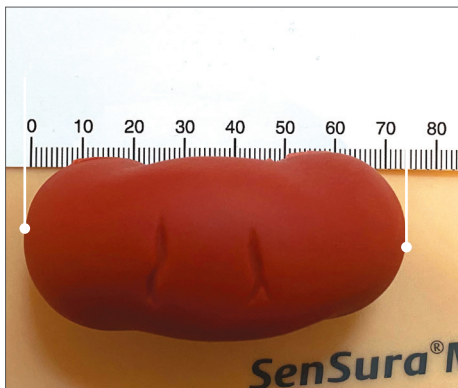
3. Using the folded measuring guide, measure the stoma from top to bottom. Find the best size for the stoma that creates a snug fit.



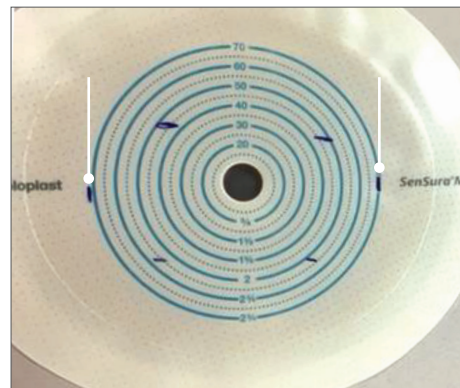
4. On the back of the barrier, mark the top and bottom of the oval stoma size.



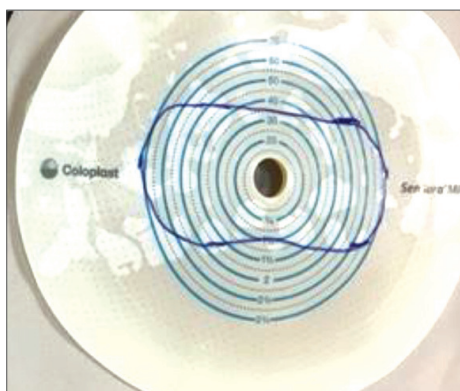
5. Using the ruler on the measuring guide, measure from side to side.



6. Mark the sides.



7. Connect all the dots and cut the barrier to make the hole to fit **snug** against the stoma and make sure no skin is showing.



*Prior to use, refer to the product 'Instructions for Use' for intended use and relevant safety information.*

**If you are discharging the patient and need to enroll for education, call Coloplast® Care at 1-877-858-2656.**

*Please note, the oval stoma may be top to bottom or left to right. The method for measuring would be the same. These instructions show how to measure a left to right oval stoma.*